

Halcyon disk space manager



The Halcyon Disk Space Manager provides comprehensive analysis of all disk resources including the IFS.

Now you can quickly see what is taking up your disk space and remove long-forgotten files, out-of-date test libraries, old spool files, save files and IFS folders.

Don't waste money on disk upgrades when you can easily reclaim disk space being used by redundant data and deleted records.

features

- Analyse complete disk resource including IFS using flexible, multi-streamed, build processes for improved efficiency and reduced build time
- Decide what level of detail is required for each object. For example, analyse system libraries to library level while analysing your user libraries to member level - or let the system automatically decide the level of detail, based on how stable the library size is
- User-defined "Applications" allow you to create a named collection of libraries, folders and/or directories which can then be analysed as a single unit with their own build settings. Self-maintaining, generic, applications can be created by adding one of the pre-defined special values, such as *ALLUSR (all user libraries), or by using generic names such as ABC*
- Advanced hierarchical Viewer allows you to analyse the collected data using a comprehensive set of standard and user-definable display formats, allowing the data to be displayed exactly how you want it
- Sorting and filtering options, together with tree-mode and flat-mode display options, enable you to easily find the information you want
- Save displayed information as a user-defined View. Saved Views can be applied to any build to quickly display the information you want, in the way you want
- Data can be enhanced in detail or refreshed from within the Viewer. If a library has only been analysed to library level, you can still drill down into it - you will be prompted to run a dynamic build to add the additional detail there and then, thereby saving time
- Percent change and actual change trigger thresholds can be set to alert when exceeded
- User-definable reports can be printed automatically as part of the build process, or you can print data on an ad-hoc basis from the Viewer
- Real-time interrogation and drill-down through a familiar Windows® graphical interface
- Using the Quick Setup you can configure the analysis settings to your own requirements in just a few minutes.

Save money - avoid unnecessary disk upgrades by performing regular system housekeeping to keep disk usage in check.

Improve system performance by increasing available disk space.

Drastically reduce the time needed to manage your disk space - this can now be done automatically and on a regular basis.

Quickly find out what objects are taking the largest amount of disk space.

Prevent critical storage conditions being encountered by having early warning of increased disk usage.

Reduce the risk of disaster by knowing what libraries and other objects have not been saved for some time.

See at a glance disk usage over all your LPARs

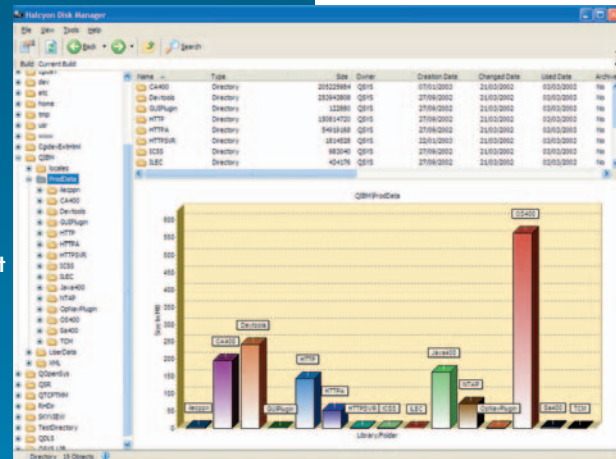
Analyse trends from historical analysis and predict when disk capacity will become a problem.

Quickly discover the cause of sudden increases in disk usage, or unexpected decreases.

Prevent nasty surprises - find out which objects don't have source, which source members do not have compiled objects and those objects whose source has since been modified.

Check that old SAVFs are not being kept unnecessarily on disk.

Identify those physical files having large amounts of deleted record space and automatically reorganise them.



Halcyon Software Ltd
5 The Forum Minerva Business Park
Lynchwood
Peterborough
PE2 6FT
England

Tel: +44 1733 234995
Fax: +44 1733 234994
Email: sales@halcyonsoftware.com

IBM and iSeries are registered trademarks of International Business Machines. Windows is a registered trademark of the Microsoft Corporation.

download a **FREE** trial at www.halcyonsoftware.com